

LGB 20060 Gang Car en

Backfitting of a LGB “Gang Cars” with a eMotion-LS Sound module. (Picture 1)

Simple Retrofit only sound



Picture-1: LGB 20060 : “Gang Car”

Needed Parts:

- 1x 8221006 eMotion-LS Sound module: Gang Car
- 1x 8241050 Speaker

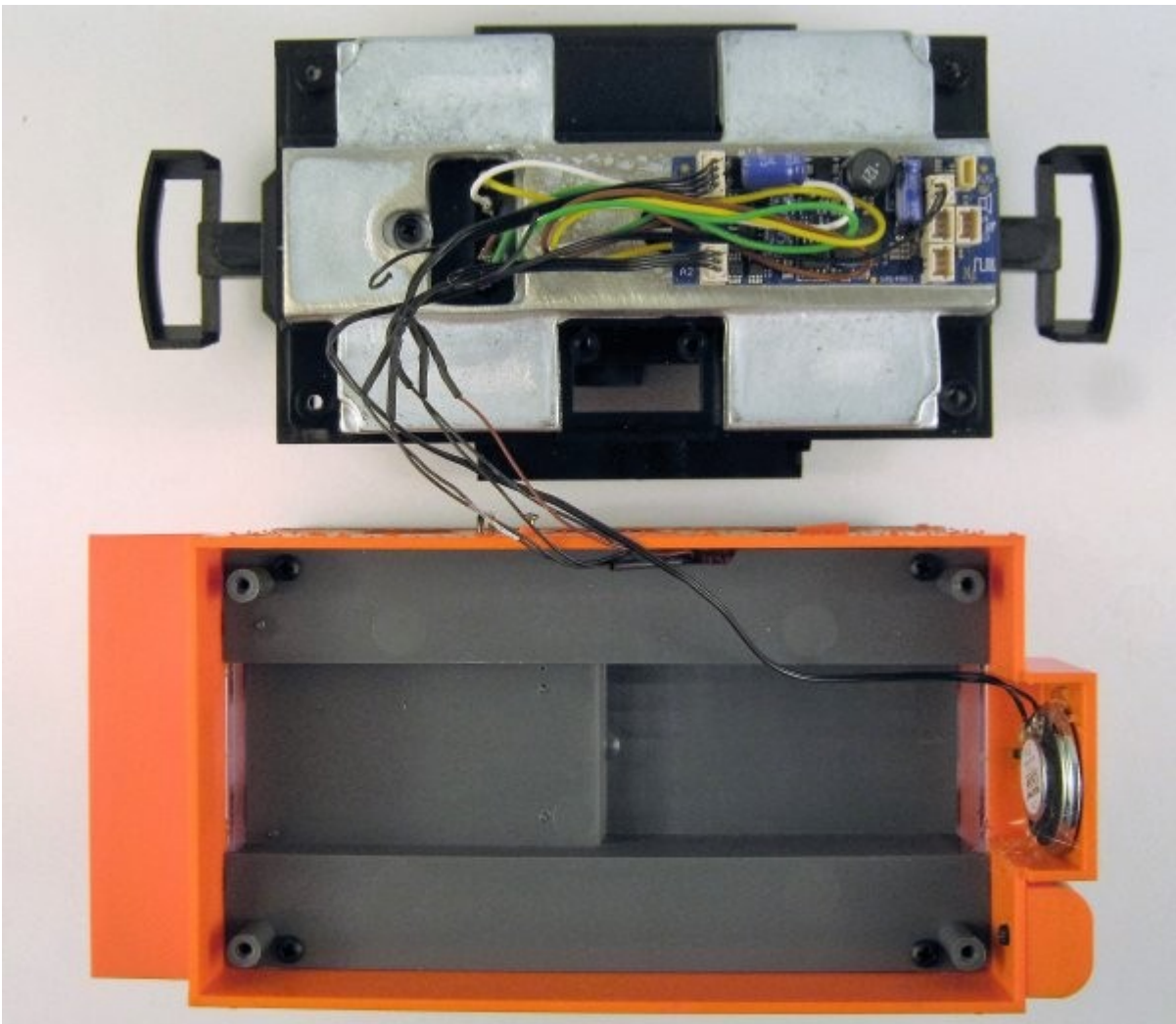


Picture-2: Demount the Car.

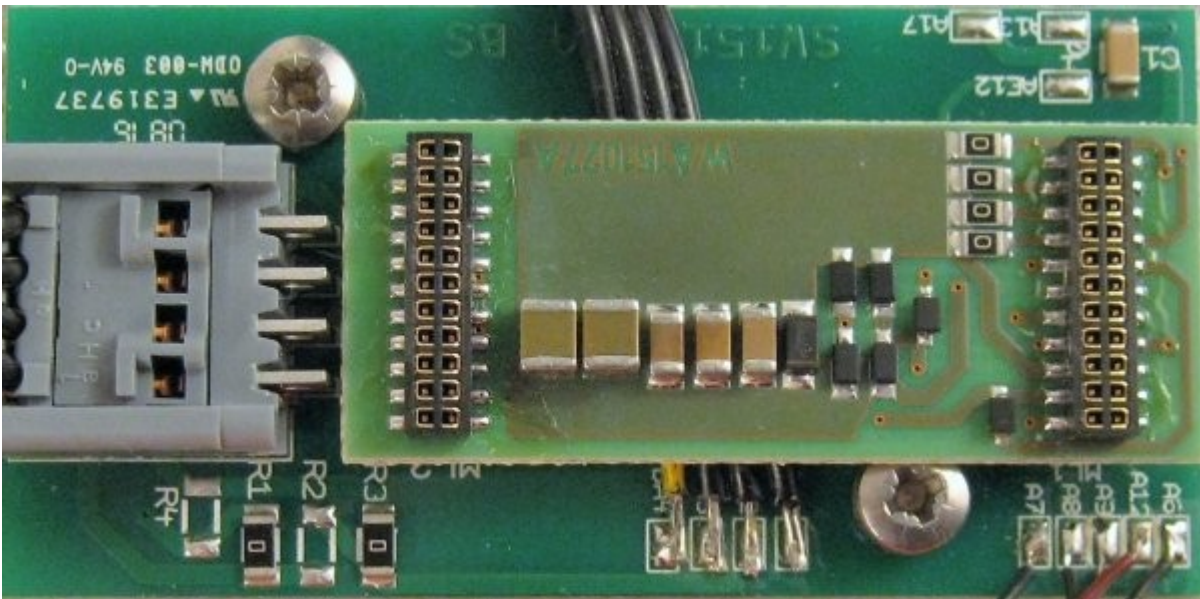
Backfitting:

- Remove the 4 marked screws on the bottom.
- Remove PCB and switch with removing of both screws.
- We recommend to mill some long holes for better sound quality.

If you don't want to do that you can glue the speaker in the middle of the motorfront.



Picture-3: Backfitting the decoder + speaker
Mount the LS Decoder with a adhesive pad



Picture-4: Connection of the loco PCB

Solder the cables of the original PCB like described.

- A7 to Light rear
- A8 to A2 (Light interior rear)
- A1 to A1 (Light interior front)
- A12 to Decoder +
- A6 to Light front

CV-Programming:

The decoder is pre-programmed for the car.
(CV 56 = 7) A2 is switchable with Key 7 .

Enhanced notes:

- You can increase the volume with CV 200 (e.G. Value 60).

Additional Note:

You can enhance the sound quality with using of a different speaker or better position.

Enhanced retrofit with Powercap micro

For better performance on an outdoor layout, a Powercap Micro is recommended.

Needed parts:

- 1 x 8151601 Powercap Micro
- Small hand drill with milling insert
- Hot glue

In addition to the above loudspeaker installation, you can also install the loudspeaker in the driver's cabin floor. The acoustics is so perfect.

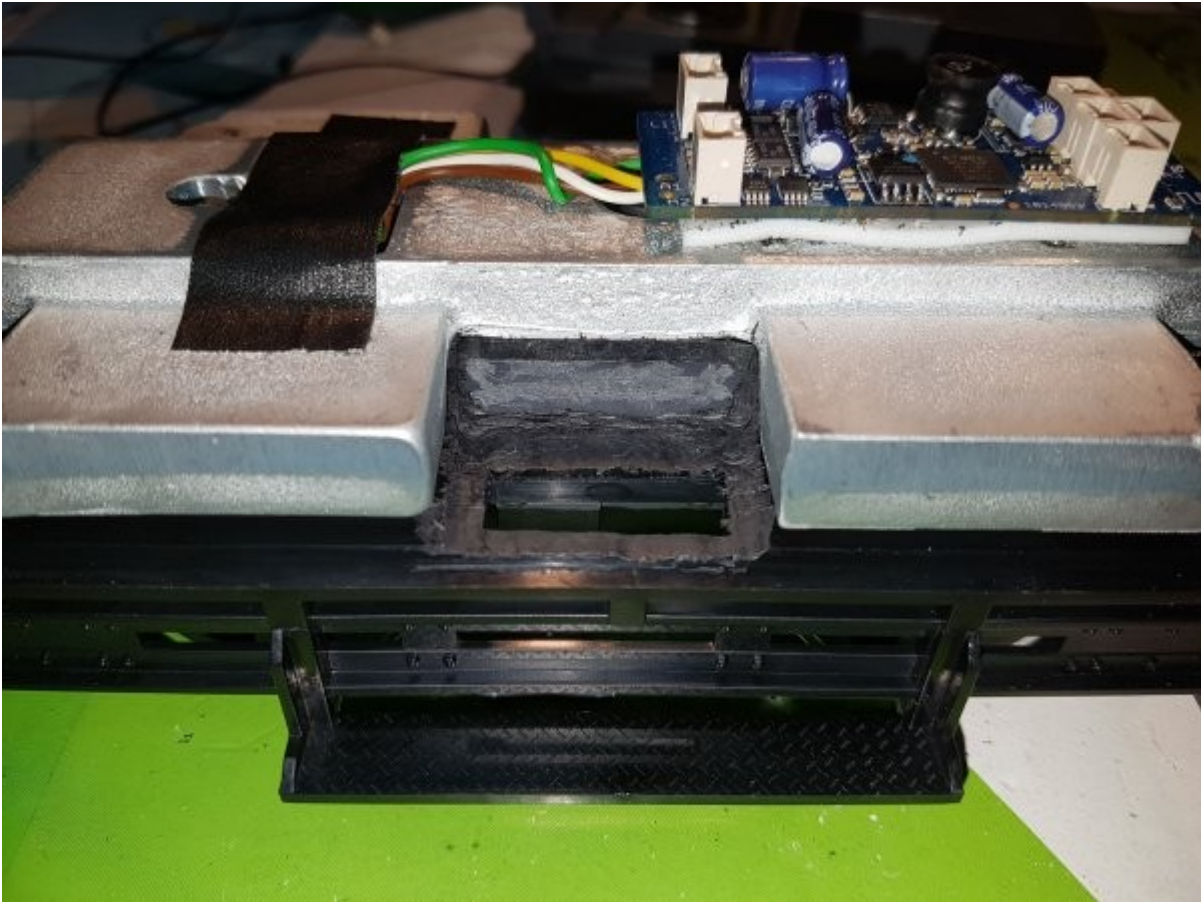


Picture-5: Other built-in variant speakers.

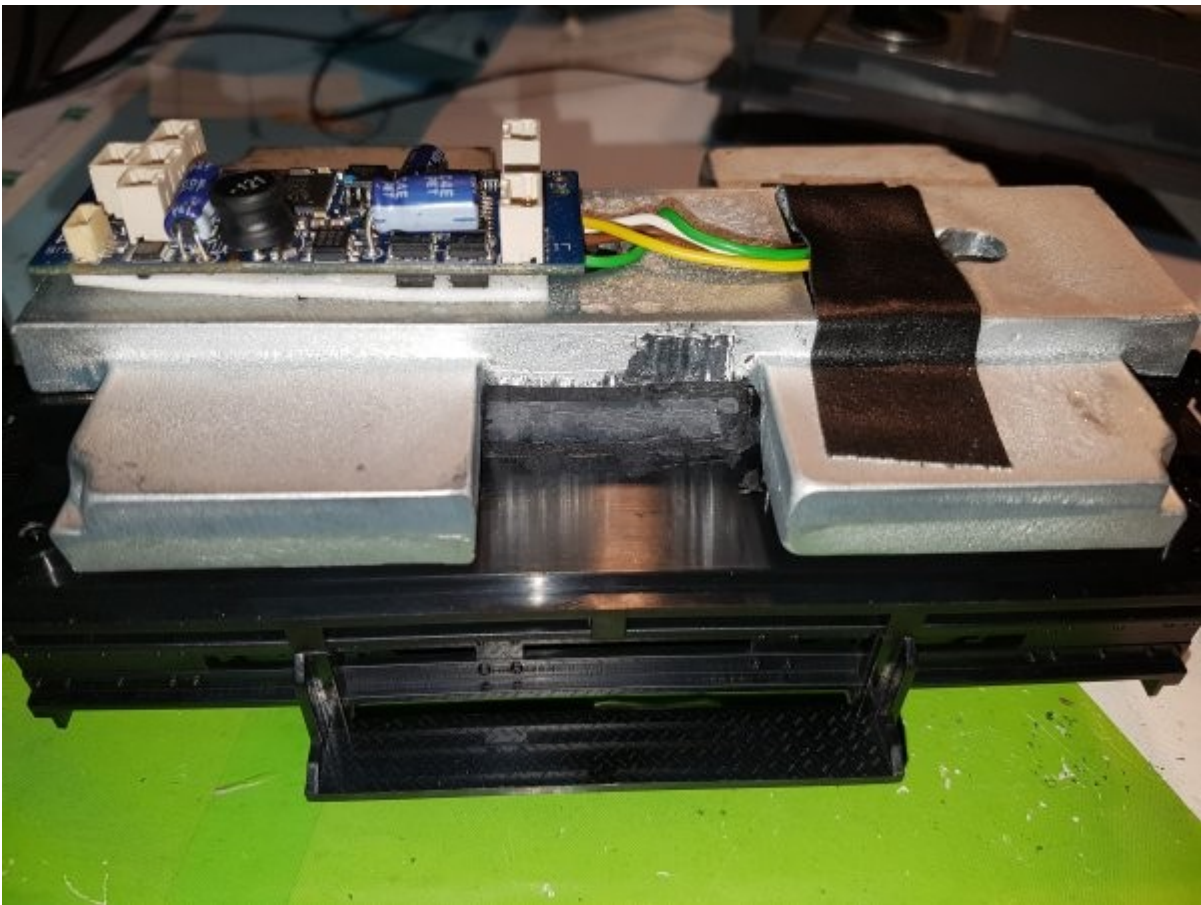
For the installation of the Powercap Micro, the plastic guard must be carefully removed from the 2 parts with 3 capacitors!

Disconnect the mounting tabs of the switch.

Then work with the cutter as shown in Picture 6 and 7



Picture-6: Editing the housing part 1.



Picture-7: Editing the housing part 2.

Both sides ground away until the beginning of the motor housing.

On Picture 6-part 1, mill approximately 2-3 mm downwards.

On the side where no switch was, the weight as shown still some milling away.

Always test again if nothing stands over the edge!

Now as shown in Pict. 8 and 9, install and stick.

Where two modules are superimposed on each other, you must install EXACTLY SO!

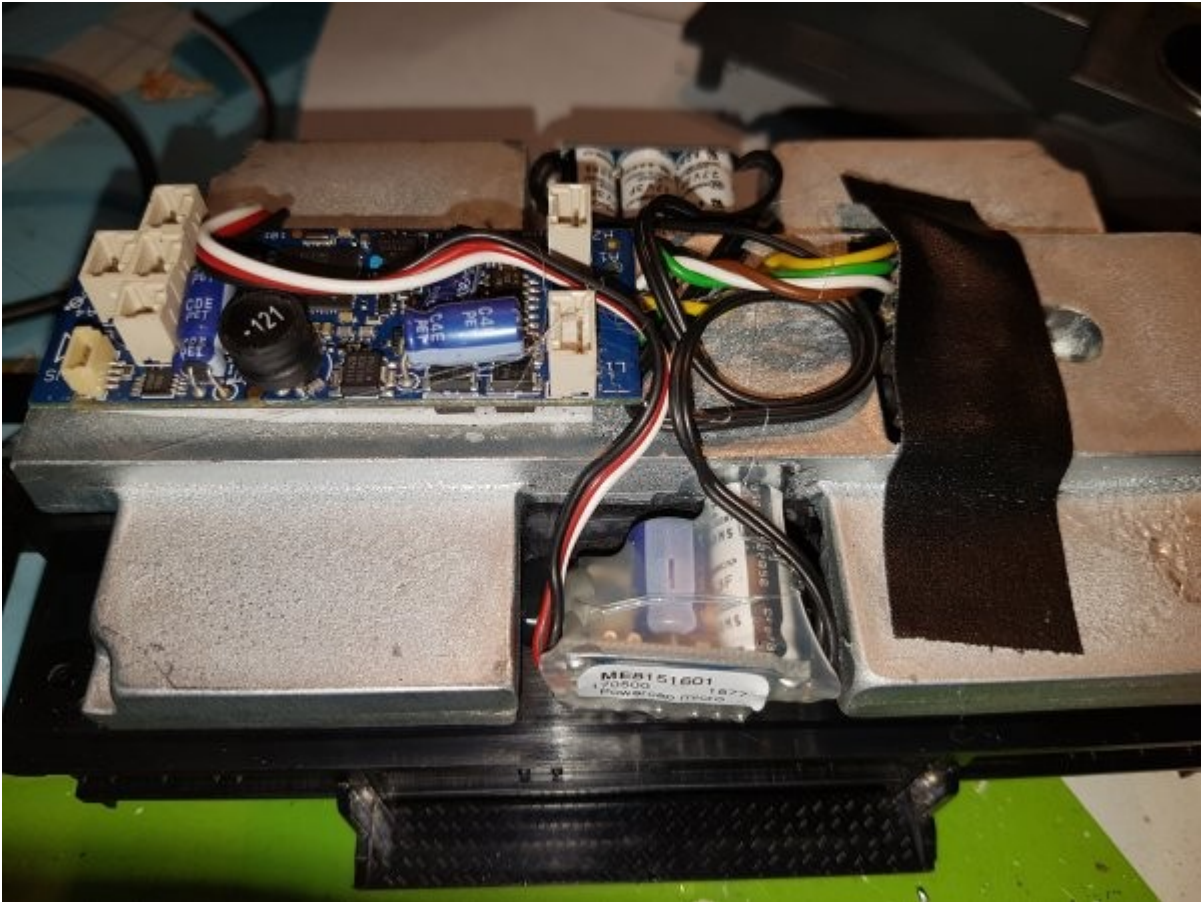
Lower module with bottom side of the PCB to gearbox.

Top module with bottom side of the PCB to outside

Fix the whole with hot glue.



Picture-8: Fixing with glue part 1.



Picture-9: Fixing with glue part 2.

Solder the module as instructed.