

Piko BR132 (Ludmilla) en

We will describe here the installation of a XLS and pulsed smoker in the Ludmilla PIKO loco.

Needed parts:

1 x XLS 8220610

1 x Pulsed smoker digital 8413501

The locomotive is easy to digitize through the new PIKO interface.

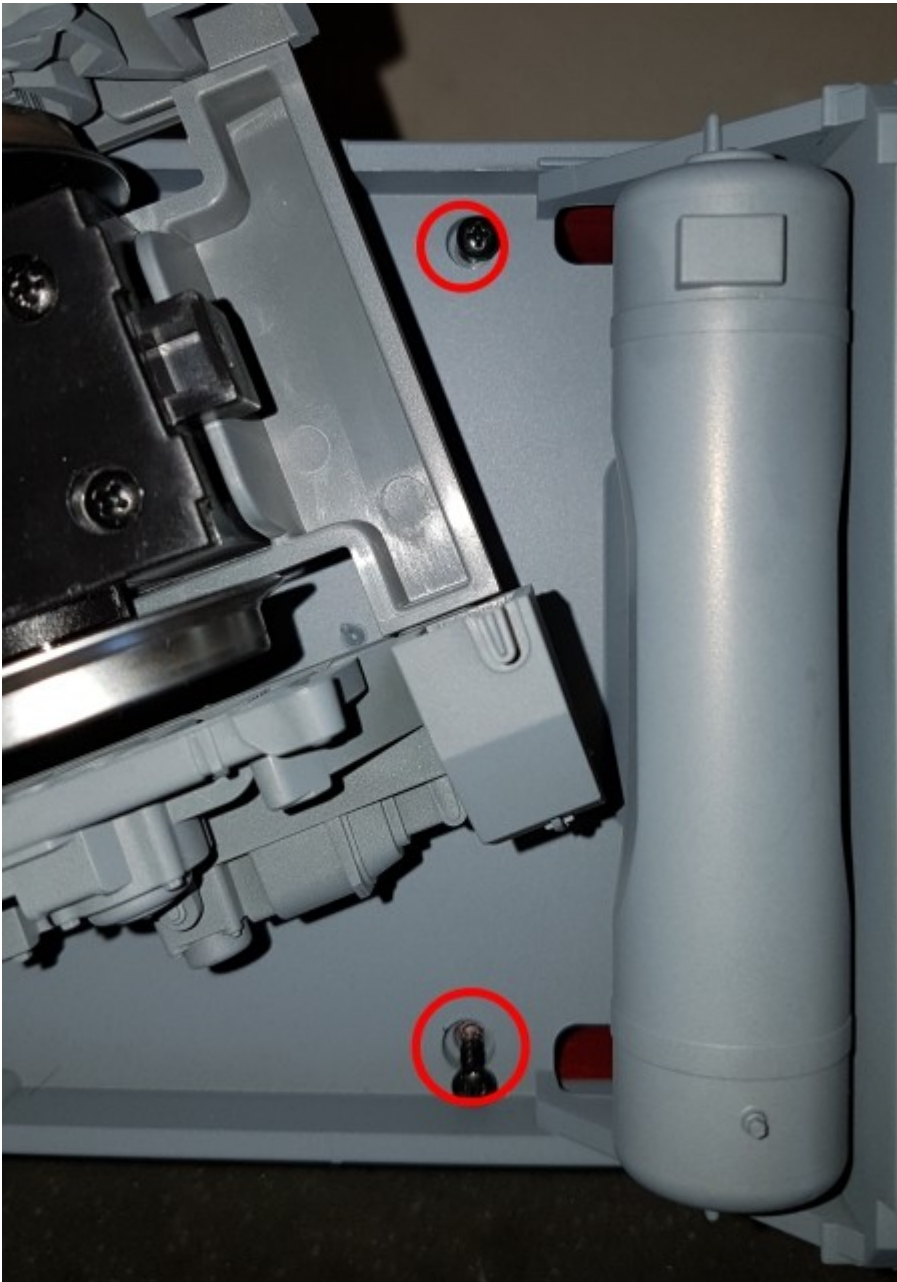
After the retrofit you will have a loco with sound, lights, high beam and steam.

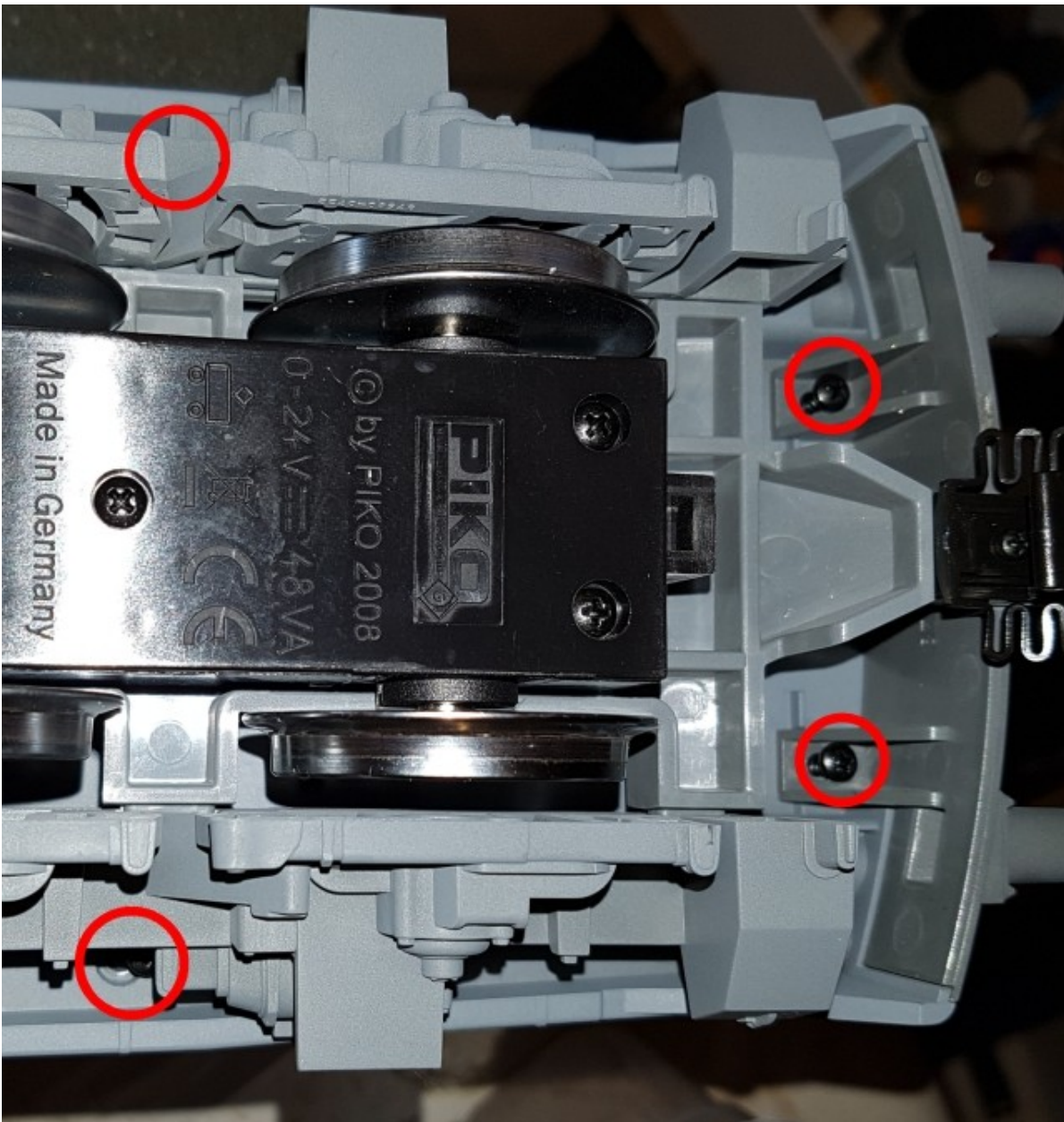
Dismount the speaker plate as shown in the picture.



Pict. 1: Demounting speaker cover

Now disassemble the housing upper part with 12 screws.
The images show the 1 half of the locomotive. On the other half of the screws are identical.





Picture 2+3: Demounting upper part

When removing the upper housing part the footsteps plates front / rear will falling off, watch out!



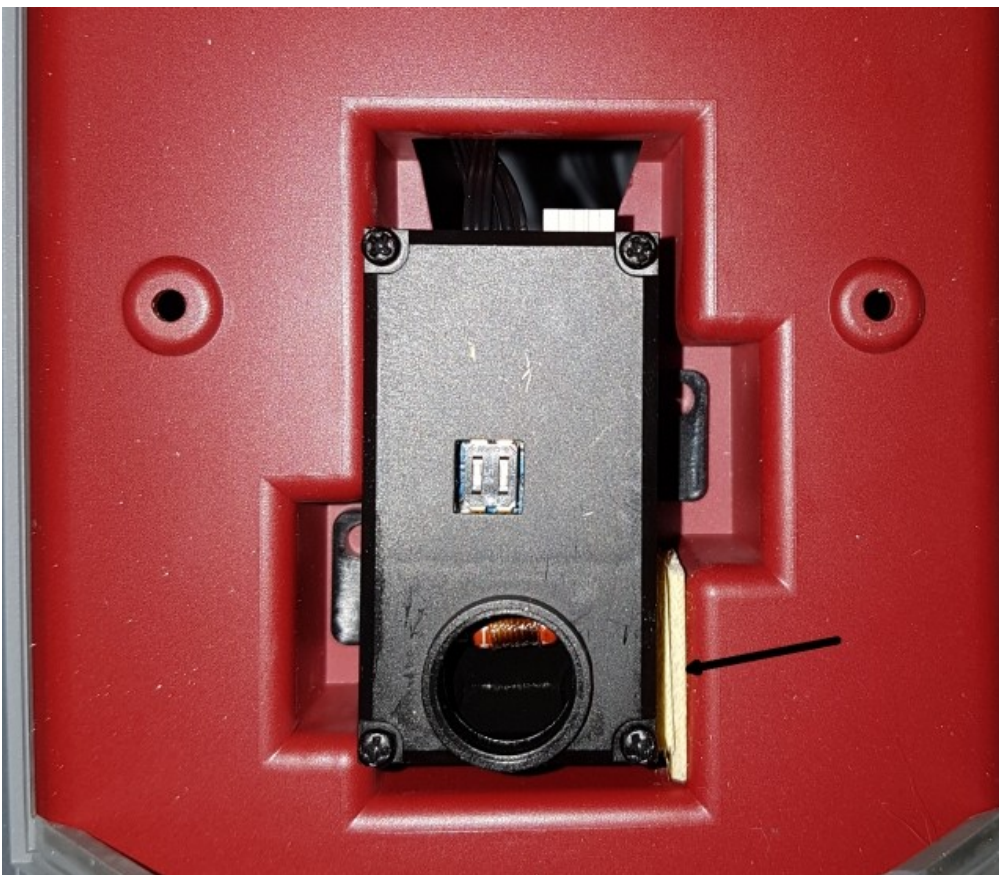
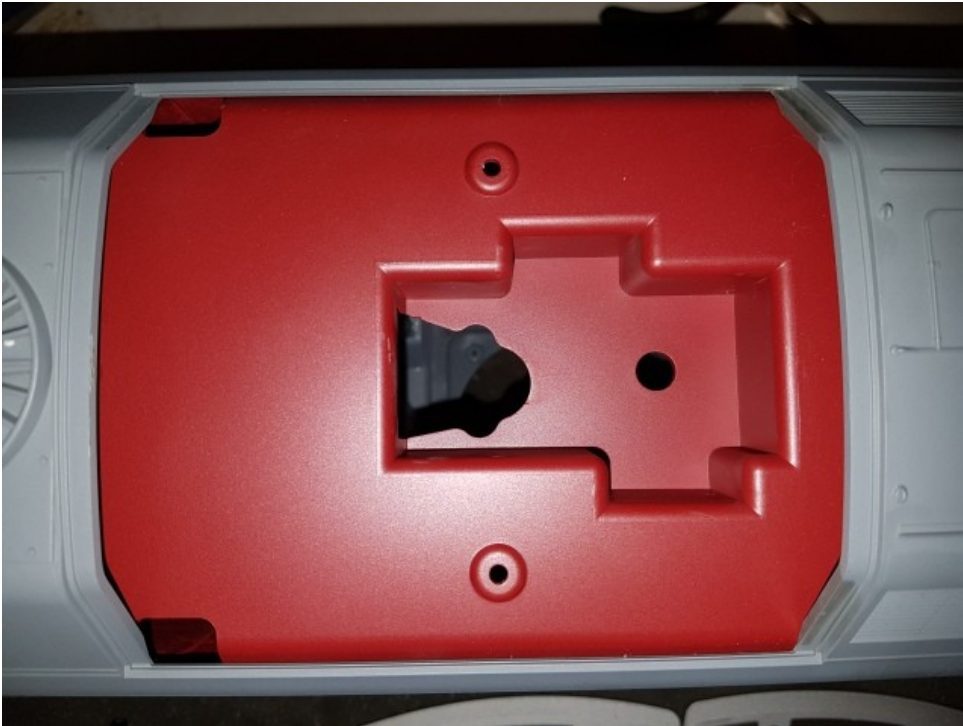
Picture 4: Footsteps plates front / rear

To fit the Pulsed Smoker you have to release the 2 screws.



Picture 5: Demounting exhaust top

Now you can see the mounting box for the pulsed smoker. You don't need any screws. However, the evaporator is not fixed 100%. And I fear that it thereby produce noise during operation. Therefore, I have fixed the pulsed smoker with two 1.5mm Epoxyd plates.



Picture 6+7: Mounting the pulsed smoker.

Thus, the steam comes out only from the exhaust pipe, the pipe must be widened with a 9mm piece of our thickest hose.



Picture 8: Widening of the exhaust pipe.

At the central distribution board Pull out the purple wire (main beam) and lead out downwards.



Picture 9: Prepare wire for high beam.

We advise you to pack more weight in the locomotive. Either with the addition of Pack PIKO or with real lead weights. These were fixed with good hot glue.
Do not save here with Glue!



Picture 10: Additional lead weights.

Then connect the decoder as follows:

Violet = A1(High Beam)

Yellow = Light front

Red = Motor -

White + Black from pulsed smoker = Track -

Grey + Black from pulsed smoker = Track +

Blue = Motor +

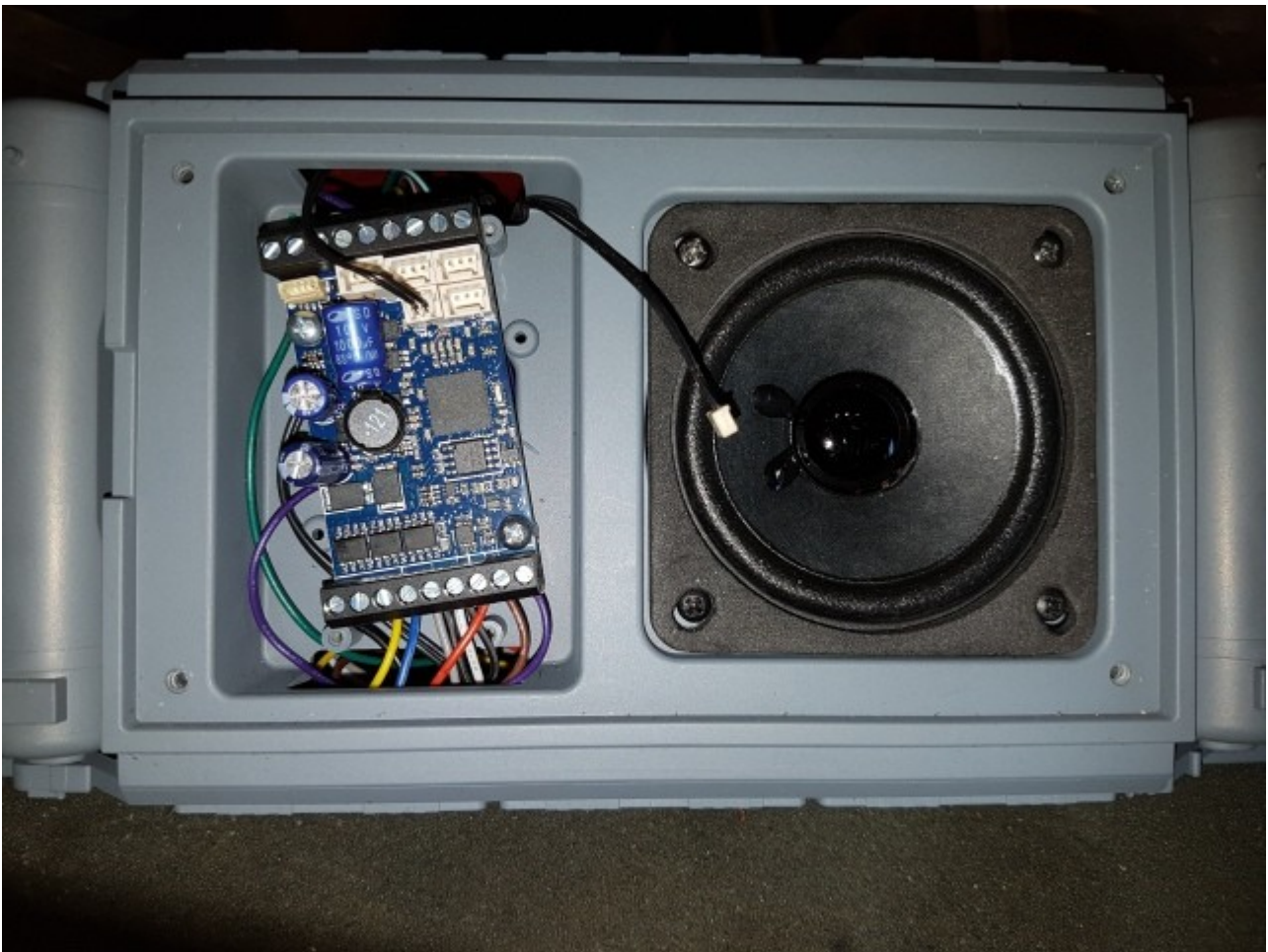
Brown = Light rear

Black = Decoder +

The speaker is fixed with 4 screws and electrically connected.

The decoder is diagonally mounted using the supplied short screws. Then nothing should be drilled
Break the label tabs before.

Do the SUSI cable of the pulsed smoker for later update purposes in the decoder space.



Picture 11: Final assembly.

Mount the locomotive now completely. Do not forget to mount the footsteps.

Now program your loco:

CV15=160 (Programming pulsed smoker)

Now program with the Navigator the locomotive address, speed step and serial / parallel
Change any values if desired. CV 15=0 (Programming lock)

CV 15=148 (Programming XLS)

Now program with the Navigator the locomotive address, speed step and serial / parallel

CV54= Key for high beam

CV3= 80 (realistic acceleration delay)

CV60= 1 CV61= 100 (optimized values for motor)

For a realistic steam chuff synchronized with motor start program like described:

CV 110 = 5 (Key Preheating)

CV 120 = 5 (Key fan ejection)

CV 126 =12 (Delay fan ejection)