

Piko V36 en

Retrofit of a “PIKO Diesel Loco V36” with a eMotion XLS Sound decoder. (Picture 1)
The loco has 3 headlights front and rear and a cabin light.



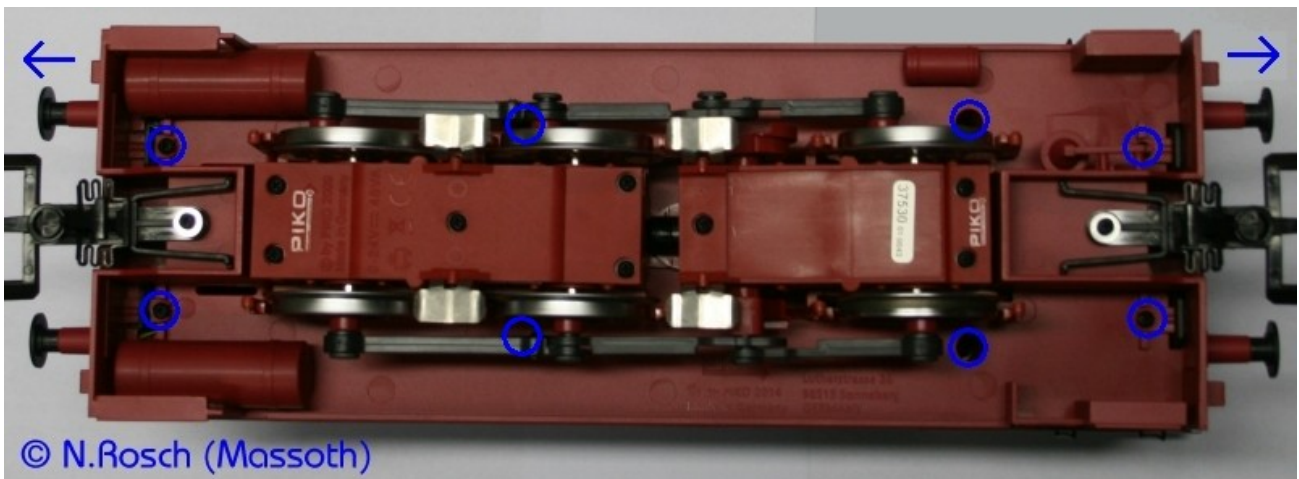
Picture-1: PIKO 37530 “V36”

Needed parts:

1x 8220600 XLS-Sound decoder : V36
2x Diode 1N4007 (for shunting light)

Retrofit:

- Open the loco with the 8 marked screws on the bottom.
- Remove both buffers to release the locking.



© N.Rosch (Massoth)

Picture-2: Open the loco

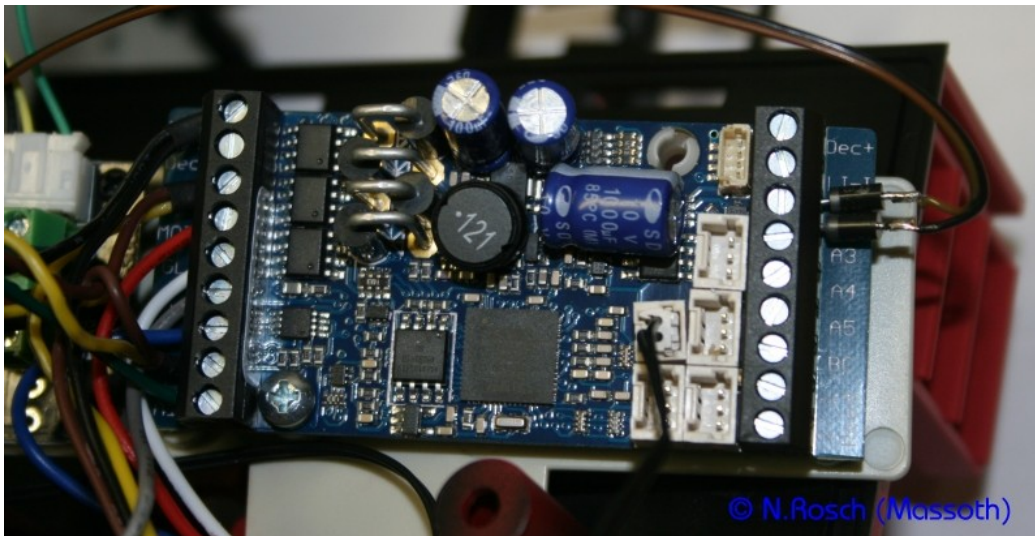
- Mount the speaker with 2 screws on the front of the housing.
- Plug the 2-pole speaker cable in the 2-pole socket of the decoder.



© N.Rosch (Massoth)

Picture-3: Mounting the speaker

- Remove the analog adapter and mount the decoder on the mounting plate with a screw



Picture 4: Connection of the decoder

Connection of the decoder:

- “GL+” = white cable
- “GL-” = grey cable
- “Mot+” = red cable
- “Mot-” = blue cable
- “+24V” = black cable
- “LI-V” = yellow/brown cable for light front
- “LI-H” = yellow/brown cable for light rear
- “FA1” = green cable for cabin light

Mount decoder with a screw like shown in picture 4.

Programming:

- All CVs are preset for this loco.
- You can dim the light with CV 50 (e.g. Value=20)

IMPORTANT: The decoder is preset for LGB-MTS (14-speedsteps + Serial).

- DiMAX-User have to program CV29=2 (28-speedsteps) and CV49=2 (Parallel functions)

Enhanced retrofit:

Optionally, you can still add a shunting light function.

When turn on shunting speed (F8) all 6 headlights will be on.

- Therefore you need 2 Diodes 1N4007 connecting the kathode (-) on FA2.
- Connect the anode (+) with light front, respectively light rear.

Programming:

- CV56 = 8 (Switching the shunting light with shunting speed)

IMPORTANT: Wrong cabeling or programming can cause to a damage of electronic parts!
Take care that no wires are pinched or damaged during assembly by screws.